

TOWNMOOR

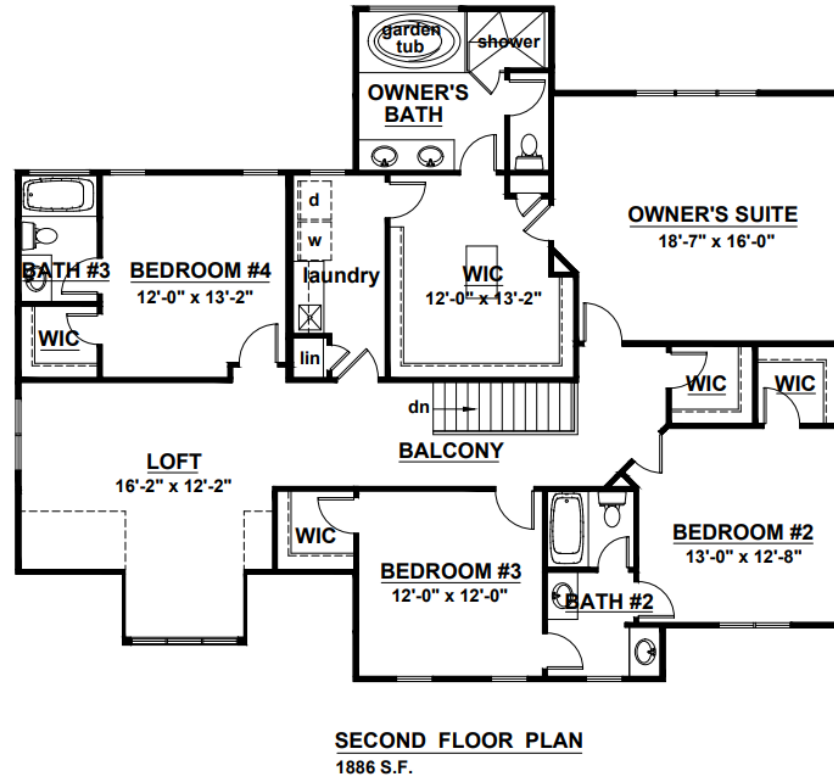
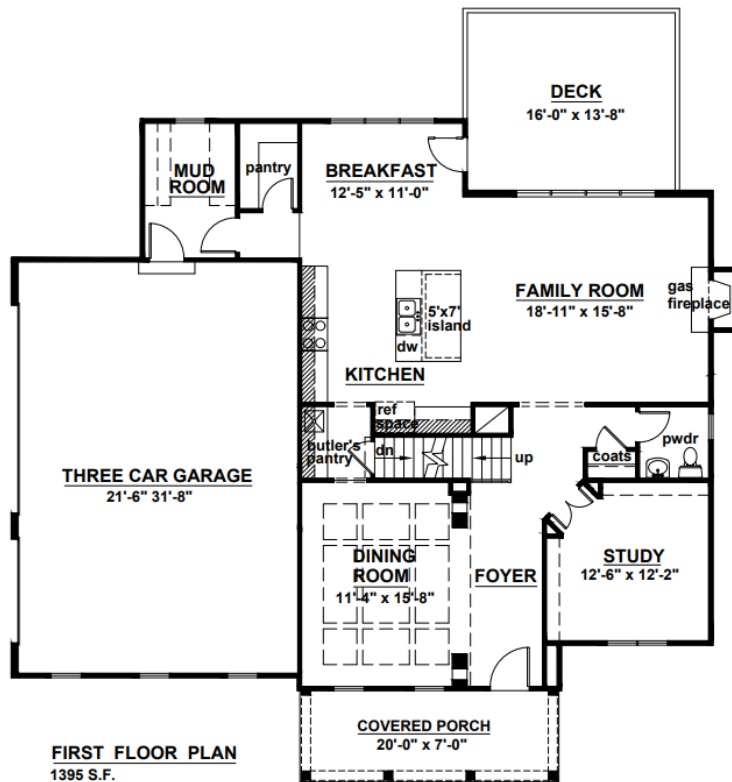
**5 BEDROOM, 4.5 BATHS, 3 CAR GARAGE
4,014 SQUARE FEET**



* Pricing, amenities, including features, availability and deliver dates are subject to change without notice. Elevations will vary. Square footage and measurements are approximate. Pictures, photographs, colors , features, and sizes are for illustration purposes only and will vary from homes built.

TOWNMOOR

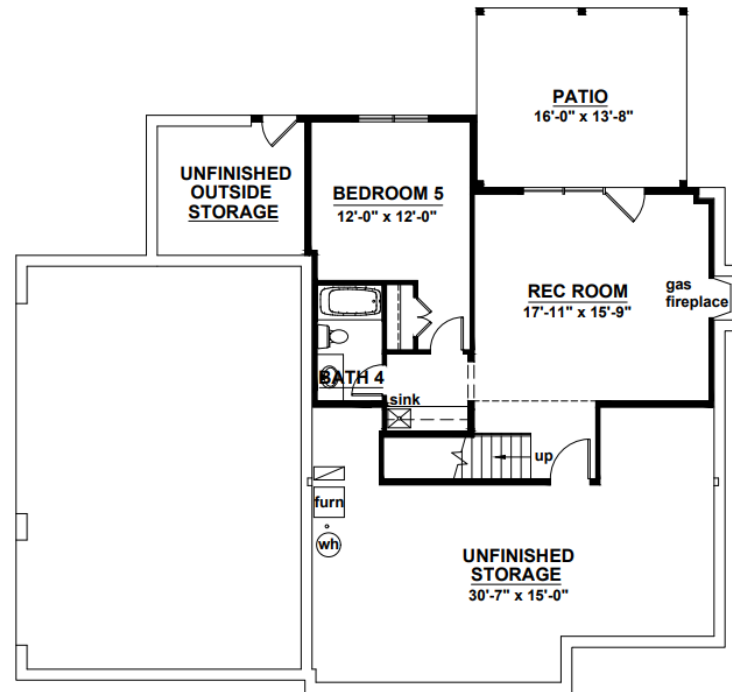
5 BEDROOM, 4.5 BATHS, 3 CAR GARAGE
4,014 SQUARE FEET



* Pricing, amenities, including features, availability and deliver dates are subject to change without notice. Elevations will vary. Square footage and measurements are approximate. Pictures, photographs, colors, features, and sizes are for illustration purposes only and will vary from the homes built.

TOWNMOOR

5 BEDROOM, 4.5 BATHS, 3 CAR GARAGE
4,014 SQUARE FEET



BASEMENT FLOOR PLAN
1411 S.F. TOTAL / 708 S.F. FINISHED
701 S.F. UNFINISHED



* Pricing, amenities, including features, availability and deliver dates are subject to change without notice. Elevations will vary. Square footage and measurements are approximate. Pictures, photographs, colors , features, and sizes are for illustration purposes only and will vary from the homes built.